

SMART Warehouse Lighting

Most warehouse facilities have a variety of functions- from picking operations and packaging to shipping and receiving, assembly and even office work. Therefore, good lighting is important in terms of increase productivity, safe environment and energy sustainability. With Ecosparks products, we can cover all applications in warehouse (storage rack area, manufacturing area, loading area) with at least 50% energy saving. Furthermore, with our smart wireless lighting system, we can achieve more energy saving with smart sensors in a safe working environment.



Access warehouse lighting through web



Energy Saving



Electricity Bill



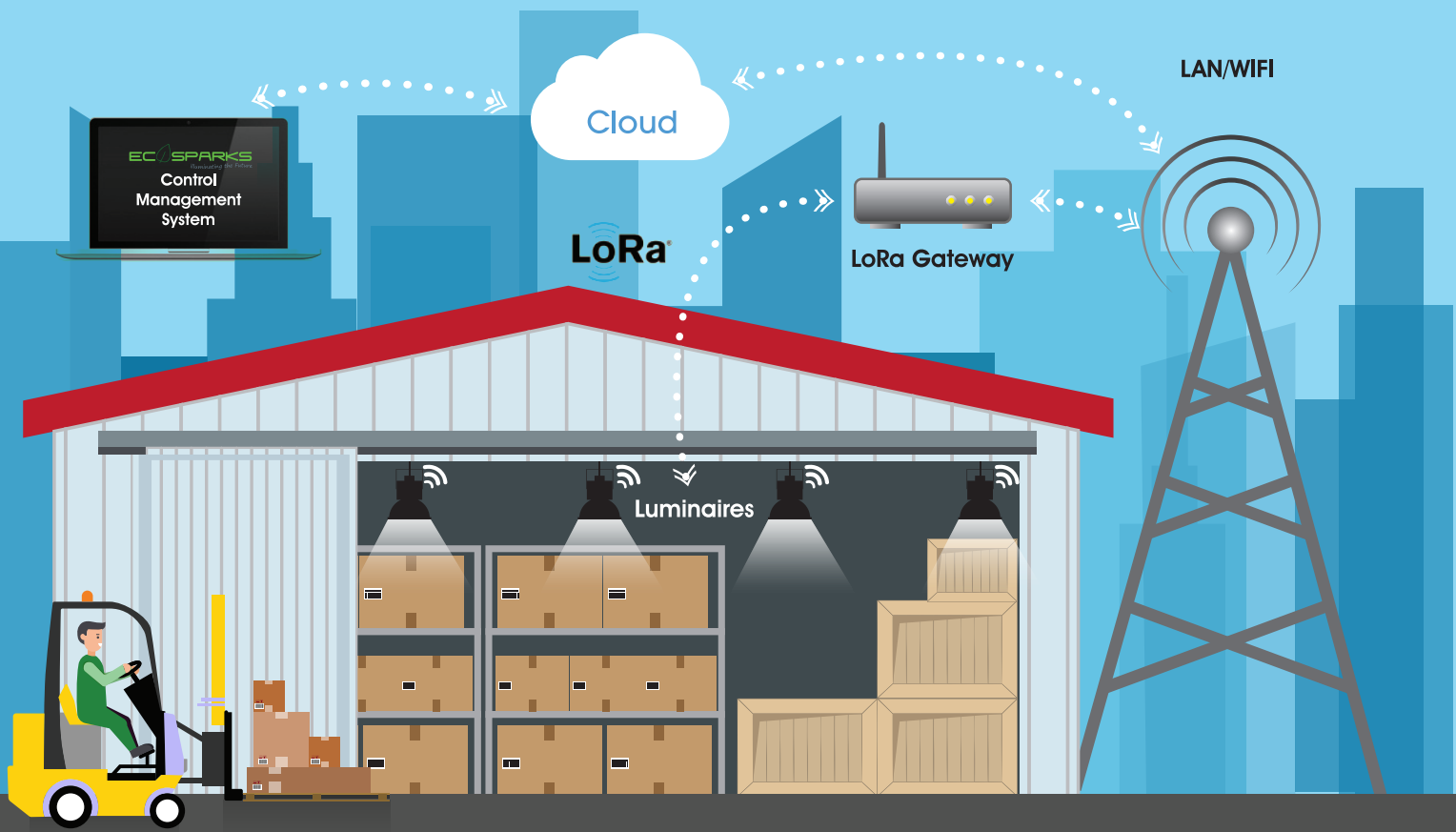
Energy Consumption



Real Time Monitoring



Notification



Engage in the IoT Era

Utilise technologies of the future by adapting an Ecosparks customised solution.

We promote Smart Warehouse lighting that uses LoRa via the web-browser. This allows the user to:

- ▶ Configure, control, monitor and analyse each segment (aisles, walkway, logistic area etc.) network
- ▶ Enable a wide range of functions that makes warehouses and heavy industries more intelligent and safe
- ▶ Wirelessly and remotely monitor, control and manage individual lights, through easy commands such as 'ON', 'OFF' or 'DIM' simply through the internet
- ▶ Schedule tasks with remote management, to deliver the right brightness in the right place and at right time
- ▶ Improve efficiency and quality of service
- ▶ Provide information about system status in real time and reduce maintenance costs.

LED Driver

The LED driver is designed with integrated Intel Quark SE C1000 32MHz Microcontroller module to enable SMART solution. Dimming range from 20% to 100% helps to reduce unnecessary energy wastage. In addition, metal case with IP66 suitable for indoor and outdoor application.



GENERAL SPECIFICATIONS

CPU	Intel Quark SE C1000 32MHz Microcontroller	Dimension (L*W*H)	301 * 84.55 * 65.52mm
LoRa Transceiver	Semtech SX1276	Net Weight	1.2Kg

INPUT SPECIFICATIONS

Voltage	220~240VAC
Frequency Range	50/60 Hz
Efficiency	88%
Power Factor	0.95

OUTPUT SPECIFICATIONS

Output Voltage Range (Without Dimming)	160 – 189VDC
Output Current	700 mA
Max Rated Power	140W

PROTECTIONS

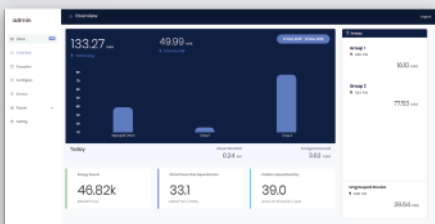
Over Voltage Protection	220V; Reconnect LED load and repower to recover.
Short Circuit	No damage should occur when any operating in a short circuit condition; The power supply shall be auto recover when the fault condition is removed.

ENVIRONMENT SPECIFICATIONS

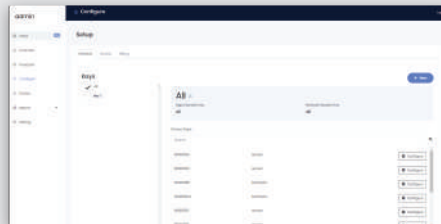
Operating Temp.	-20 ~50°C	Storage Temp.	-40 ~60°C
Operating Humidity	10 ~ 95 % RH	Storage Humidity	5 ~ 95 % RH

User interface

Overview



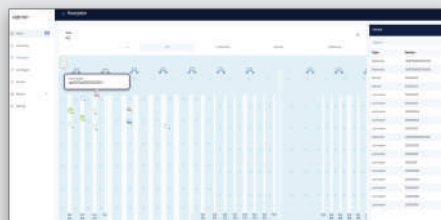
Configure



Report



Floor Plan



Smart Features

Web Dashboard



Simple user interface for controlling luminaires remotely via internet.

Live Energy Monitoring



Allows real-time monitoring of energy consumption of each luminaire and sensor.

Fault Detection



Real-time error feedback for luminaires and sensors.

Notification Alert



Push notification will sent out via email notification to enhance security system.

Group Lighting



Allows grouping of selected luminaires for easy control.

Scene Setup



Allows setups of different scenes through various luminaire dimming levels.

3in1 Sensor



Motion Detection, Temperature Control and Lux Sensor

The sensor of tomorrow, embedded in the light fixture, can collect information to feed into various systems and unlock the future of what the Internet of Things promises us.

All specification and technical parameters of the products provided in this brochure are for reference only. Content will be renewed periodically. For detail, please contact our sales teams.